



## Ski apartments Madonna di Campiglio, Pinzolo, Marilleva Folgarida

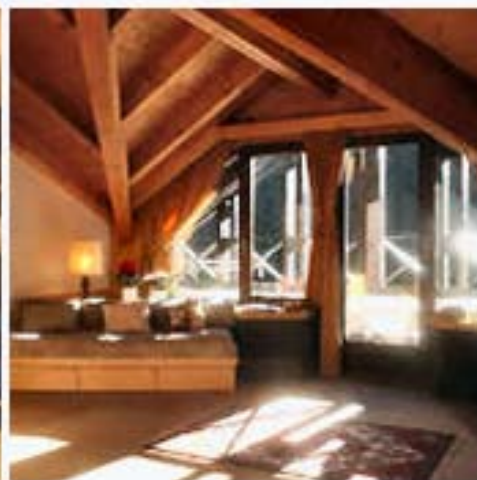


SkiingItaly.net

### Apartments Ambiez Residencehotel \*\*\* Madonna di Campiglio

Located in Campo Carlo Magno, about 1 km from the center of Madonna di Campiglio, in a sunny and panoramic setting at the edge of the wood: just in front of the Grostè cable car and the Pradalago chair lift, close to the Spinale gondola, you can reach with skis on.

Ambiez proposes spacious self catering apartments and studios completely furnished, with all comforts: bathroom with shower and WC, kitchenette, direct dialling telephone, SAT-TV; most of them have a balcony. In the Residence you can find snack bar, restaurant, indoor swimming pool, fitness room, new wellness centre, children's playroom, video- games, laundry, ski room, garage. Ski and snow-board instructors welcome you every evening in the lobby for information and booking of ski lessons. 10% discount on ski rental at the local ski school.



**Special for families with little children:** kindergarten in cooperation with the ski school from 9.30 a.m. to 4 p.m. with ski lessons in the morning and various activities in the afternoon.

**The apartments of Residencehotel Ambiez** are completely furnished, equipped, cosy and bright, to satisfy the needs of families or couples who look for quiet and privacy.

A **panoramic indoor swimming pool**, a new wellness centre with sauna and Turkish bath and a restaurant with take away service are at guest's disposal.

Dedicated to children are specific and well equipped spaces like the baby room and the playroom.

#### Prices in GBP per apartment per week

Period	Nr of days	2 beds	3 beds	4 beds	4 beds groste	5 beds	6 beds
05/12-08/12	3	£264	£396	£528	£528	£660	£792
08/12-13/12	5	£320	£392	£477	£539	£596	£658
13/12-20/12	7	£448	£548	£668	£755	£835	£922
20/12-26/12	6	£320	£480	£640	£640	£800	£960
26/12-02/01	7	£1062	£1323	£1637	£1791	£1931	£2232
02/01-06/01	4	£546	£664	£783	£836	£931	£1130
06/01-10/01	4	£252	£294	£374	£424	£470	£519

10/01-17/01	7	£448	£548	£668	£755	£835	£1002	
17/01-24/01	7	£448	£548	£668	£755	£835	£1002	
24/01-31/01	7	£481	£601	£715	£808	£895	£1076	
31/01-07/02	7	£481	£601	£715	£808	£895	£1076	
07/02-14/02	7	£581	£668	£815	£875	£982	£1176	
14/02-21/02	7	£715	£835	£1022	£1089	£1202	£1443	
21/02-28/02	7	£715	£835	£1022	£1089	£1202	£1443	
28/02-07/03	7	£715	£835	£1022	£1089	£1202	£1443	
07/03-14/03	7	£481	£601	£715	£808	£895	£1076	
14/03-21/03	7	£448	£548	£668	£755	£835	£1002	
21/03-28/03	7	£448	£548	£668	£755	£835	£1002	
The definite price depends on the exchange rate on the day of the booking.								

**Included in the price** : 7 night accommodation heating, electric power, water, gas, bed linen and bathroom linen, swimming pool, climate charge; booking fee, booking following services: transfers,ski school; local taxes, VAT;

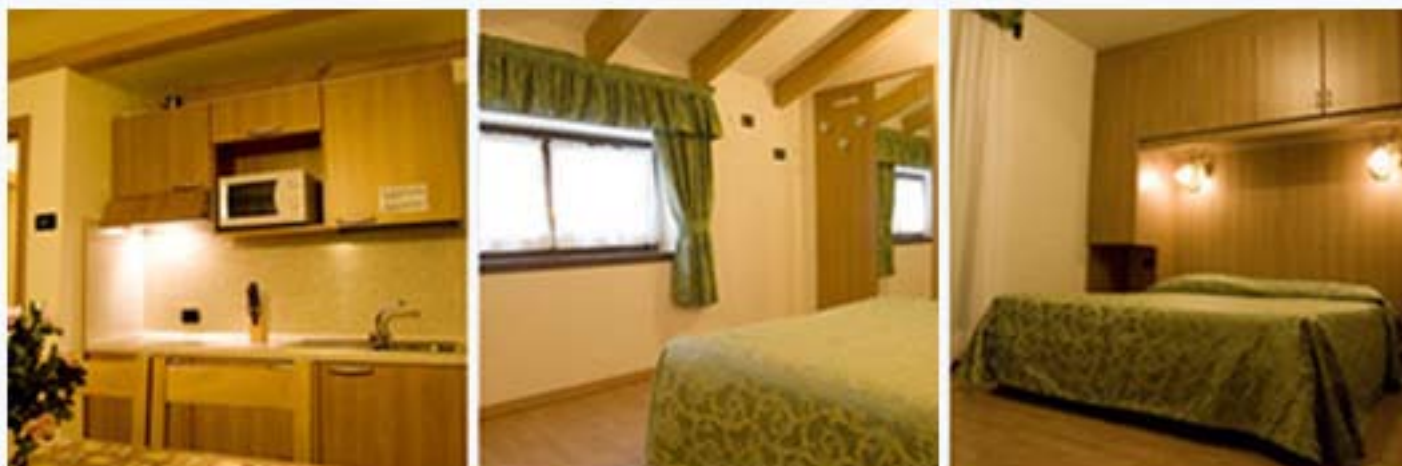
**Not included** : deposit (€100), transport, ski passes; kitchenette's final cleaning is responsibility of the client, otherwise €60 will be charged.

**Extras**: cot € 56 week, sauna €10 person, solarium €8,00 session, half board treatment available, restaurant with possibility of take-away, New Year's Eve Gala, microwave €42.

**Insurance** : Due to the EU legislation it is a condition of booking that you take travel insurance. You must either take the cover offered by us or take out another policy offering at least the same or better cover. No liability will be accepted for the consequences of any customers travelling without adequate ski insurance. We have arranged insurance policy with Signal Iduna that includes : medical cover, personal accident cover, public liability and emergency rescue. Please check thoroughly what our policy includes against others. The cost is £15 per person and is not included in the price.

## Apartments Denny in Pinzolo

Residence Denny a very nice, new apartments situated in the area Carisolo Pinzolo, well equipped with all facilities.



## Apartment types:

**BILO 2/4** – two rooms: a living room with a kitchen corner and with a double sofa-bed, a bedroom with double bed, bathroom – for max 4 persons

**TRILO 4/5** – three rooms: a living room with a kitchen corner, 1 bedroom with a double bed, 1 bedroom with 2 beds, a bathroom – for max 4 or 5 persons

**TRILO 5/6** – three rooms: a living room with a kitchen corner and with a double sofa-bed, 1 bedroom with a double bed, 1 bedroom with 2 beds, a bathroom – for max 5 or 6 persons.

## Prices in GBP per apartment per week

Period	Nr of days	BILO 2	BILO 3	BILO 4	TRILO 4	TRILO 5	TRILO 6
opening - 19.12.08	7	£325	£382	£439	£496	£554	£611
19.12 - 26.12.08	7	£353	£410	£468	£525	£582	£639
26.12 - 02.01.09	7	£764	£821	£878	£1098	£1155	£1212
02.01 - 06.01.09	4	£449	£506	£563	£668	£725	£783
06.01 - 11.01.09	4	TBA	TBA	TBA	TBA	TBA	TBA
11.01 - 18.01.09	7	£325	£382	£439	£496	£554	£611
18.01 - 25.01.09	7	£325	£382	£439	£496	£554	£611
25.01 - 01.02.09	7	£353	£410	£468	£525	£582	£639
01.02 - 08.02.09	7	£458	£515	£573	£630	£687	£745
08.02 - 15.02.09	7	£458	£515	£573	£630	£687	£745
15.02 - 22.02.09	7	£458	£515	£573	£630	£687	£745
22.02 - 01.03.09	7	£458	£515	£573	£630	£687	£745
01.03 - 08.03.09	7	£353	£410	£468	£525	£582	£639
08.03 - 15.03.09	7	£353	£410	£468	£525	£582	£639
15.03 - 22.03.09	7	£325	£382	£439	£496	£554	£611
22.03 - 29.03.09	7	£325	£382	£439	£496	£554	£611
29.03-05.04.09	7	£325	£382	£439	£496	£554	£611
05.04-12.04.09	7	£325	£382	£439	£496	£554	£611
The definite price depends on the exchange rate on the day of the booking.							

Included in the price : 7 night accommodation heating, electric power, water, gas, bed linen and bathroom linen, swimming pool, final cleaning (except for the kitchen corner), climate charge; booking fee, booking following services: transfers,ski school; local taxes, VAT;

Deposit: €50 for BILO apartment, €100 EURO for TRILO apartment, kitchen final cleaning is responsibility of the client, otherwise € 30 will be charged.

Insurance : Due to the EU legislation it is a condition of booking that you take travel insurance. You must either take the cover offered by us or take out another policy offering at least the same or better cover. No liability will be accepted for the consequences of any customers travelling without adequate ski insurance. We have arranged insurance policy with Signal Iduna that includes : medical cover, personal accident cover, public liability and emergency rescue. Please check thoroughly what our policy includes against others. The cost is £15 per person and is not included in the price.

## Apartments Nevesole Folgarida

Nevesole Folgarida is a wonderful and comfortable Holiday Hotel Residence. Located in Val di Sole, in the heart of Dolomiti del Brenta and near Stelvio National Park and Adamello-Brenta Natural Park. It is located within close proximity of Folgarida tourist centre and it is only 8 Km from Madonna di Campiglio, in an unrepeatable position with a direct exit to ski runs.

Nevesole Folgarida Residence offers 79 apartments (one-roomed flats, two-roomed flats, three-roomed flats and four-roomed flats) divided into three big Chalets which originate a complex equipped with all high quality comforts and services.



All apartments are equipped with a small kitchen, satellite TV, telephone, private facilities, ski-box and covered car park.

**Services:** reception ( 08.00 a.m. - 08.00 p.m.), bar, living-room, TV room, lift / elevator, garage. The Supermarket is 1,5 Km from the residence and it is easy reachable by the Hotel shuttle service; well-ness: solarium terrace, fee-paying sauna.

**Club Card** - activities, use of facilities and comunal spaces, gym, children aged 5 to 12 mini club at fixed time.

Period	Nr of days			
13.12 - 20.12.08	7	TBA	TBA	TBA
20.12 - 27.12.08	7	TBA	TBA	TBA
27.12 - 03.01.09	7	TBA	TBA	TBA
03.01 - 10.01.09	7	TBA	TBA	TBA
10.01 - 17.01.09	7	TBA	TBA	TBA
17.01 - 24.01.09	7	TBA	TBA	TBA
24.01 - 31.01.09	7	TBA	TBA	TBA
31.01 - 07.02.09	7	TBA	TBA	TBA
07.02 - 14.02.09	7	TBA	TBA	TBA
14.02 - 21.02.09	7	TBA	TBA	TBA
21.02 - 28.02.09	7	TBA	TBA	TBA
29.02 - 07.03.09	7	TBA	TBA	TBA
07.03 - 14.03.09	7	TBA	TBA	TBA
14.03 - 21.03.09	7	TBA	TBA	TBA
21.03 - 28.03.09	7	TBA	TBA	TBA

The definite price depends on the exchange rate on the day of the booking.

**Included in the price :** 7 night accommodation heating, electric power, water, gas, bed linen and bathroom linen, climate charge; booking fee, booking following services: transfers,ski school; local taxes, VAT;

**Deposit:** TBA

**Insurance** : Due to the EU legislation it is a condition of booking that you take travel insurance. You must either take the cover offered by us or take out another policy offering at least the same or better cover. No liability will be accepted for the consequences of any customers travelling without adequate ski insurance. We have arranged insurance policy with Signal Iduna that includes : medical cover, personal accident cover, public liability and emergency rescue. Please check thoroughly what our policy includes against others. The cost is £15 per person and is not included in the price.