



# Civetta ski area



SkiingItaly.net

## Mountain : Civetta

Civetta is situated in the heart of the Veneto Dolomites in the South-East of the Dolomiti Superski area. Main towns: Alleghe, Pescul, Palafavera, Pecol, Zoldo, Selva di Cadore. 25 lifts and 90 km of slopes for skiers of all levels – altitude from 979 mt to 2100 mt above sea level. The ski resort is surrounded by breathtaking nature and mountain scenery. Skiers can enjoy night skiing on a long slope in Palafavera. It is easy to reach other ski resorts of the Dolomiti Superski area owing to the free ski-bus service. Very famous is the “Ski tour First World War”, which leads to those Dolomites peaks where World War I was fought.

The hotels are welcoming and most of them are family-run with all the necessary comforts for an unforgettable holiday. The excellent cuisine, rich with typical dishes combines itself with the warm atmosphere of these places. Families with children are particularly welcome.



## Town: Alleghe (979 mt a.s.l.)

A small, pictorial town situated at the bottom of the stunning Civetta mountain range, only a few kilometers south of the Marmolada, in the narrow Agordo Valley, on the lake's shores. It is a renowned tourist resort, one of the favorite destinations of mountain lovers.

It is connected with the ski areas of Selva di Cadore, Palafavera, Val di Zoldo and via the Falzarego Pass with the Sella Ronda. There are free ski bus transfers to Falcade and Malga Ciapela.

## Town: Malga Ciapela (1450 m a.s.l.)

A very small village (ski station) at the foot of the Marmolada glacier and right in the heart of the Dolomites. It has direct access to the Marmolada (cable car) and with the 12 km “La Bellunese” slope from Punta Rocca 3.270 mt. It is possible to go up to the Padon Pass and then arrive at Arabba and start the tour of Sella Ronda (the biggest ski-carousel in Europe – 480 km of ski slopes).

There is free ski bus transfer to Alleghe. It is a very small, quite village, there are only few hotels, two residences, two grocery shops and one bar.

You have to try the experience of a night walk in the silence of the Serrai's gorge, canyon 2 km long, positioned at the base of the Marmolada between the villages of Sottoguda and Malga Ciapela. The ski-instructors of the Ski-school “Rocca-Marmolada” lead the torchlight-walk procession that ends at the entrance of Sottoguda. The moonlight and the torches light up the vertical walls covered with ice falls, in one of the most beautiful places in the Dolomites.

Starting-point: Malga Ciapela – in front of the ski-school, Every Thursday at 21.30  
Arrival in Sottoguda with mulled wine for everyone!!!

## Snow Park

For several years Ski Civetta has been offering to snowboard fans the opportunity to train in a freestyler and snowboard tailored snowpark.

The “oldest” snow park is set in Alleghe near the slope “Baldi” [www.alleghesuperpark.com](http://www.alleghesuperpark.com).



From the next ski season Ski Civetta is launching a big novelty: a brand-new snowpark in Zoldo, beneath chairlift Cristelin, open also at night thanks to an enlightenment plant. Now it's up to you all to jump over the pipe and perform your craziest shows! [www.zoldopark.com](http://www.zoldopark.com)

## Civetta ski pass

### Civetta ski pass

25 lifts and 90 km of slopes for skiers of all levels – altitude from 979 mt till 2100 mt above sea level.

Date		Nr of days	Adult	Junior	Senior
Opening - 21.12.2008	Pre Season	6	TBA	TBA	TBA
21.12 - 03.01.2009	High Season	6	TBA	TBA	TBA
03.01 - 17.02.2008	Season	6	TBA	TBA	TBA
17.02 - 21.03.2009	High Season	6	TBA	TBA	TBA
21.03 - end of the season	Season	6	TBA	TBA	TBA

\*Junior : born after 30/11/1992 (with identity card)

\*Senior : born before 30/11/1948 (with identity card)

### Combined ski pass 4 + 2, 5 + 1,

Civetta skiing days + Dolomiti Superski skiing days

Date		Type	Adult	Junior	Senior
Opening - 21.12.2008	Pre Season	4+2	TBA	TBA	TBA
Opening - 21.12.2008	Pre Season	5+1	TBA	TBA	TBA
21.12 - 03.01.2009	High Season	4+2	TBA	TBA	TBA
21.12 - 03.01.2009	High Season	5+1	TBA	TBA	TBA
03.01 - 17.02.2008	Season	4+2	TBA	TBA	TBA
03.01 - 17.02.2008	Season	5+1	TBA	TBA	TBA
17.02 - 21.03.2009	High Season	4+2	TBA	TBA	TBA
17.02 - 21.03.2009	High Season	5+1	TBA	TBA	TBA
21.03 - end of the season	Season	4+2	TBA	TBA	TBA
21.03 - end of the season	Season	5+1	TBA	TBA	TBA

\*Junior : born after 30/11/1992 (with identity card)

\*Senior : born before 30/11/1948 (with identity card)

### DolomitiSuperski ski pass

One modern chip ski pass gives you access to 12 varied and family-friendly ski resorts and an unbelievable 1,200 kilometers of perfectly prepared slopes.

Date		Nr of days	Adult	Junior	Senior
Opening - 21.12.2008	Pre Season	6	TBA	TBA	TBA
21.12 - 03.01.2009	High Season	6	TBA	TBA	TBA
03.01 - 17.02.2008	Season	6	TBA	TBA	TBA
17.02 - 21.03.2009	High Season	6	TBA	TBA	TBA
21.03 - end of the season	Season	6	TBA	TBA	TBA

\*Junior : born after 30/11/1992 (with identity card)

\*Senior : born before 30/11/1948 (with identity card)

## Travel and transfers

Airports distances from Civetta

Venice airport Marco Polo 120 km

Treviso airport San Giuseppe 97 km

Verona airport Villafranca 225 km

### Transfer

Airport Ski Shuttle is a transfer service to the resorts Civetta, Falcade, Arabba, Marmolada.

The service connects the major resorts with Venice Marco Polo and Treviso Antonio Canova airports during the winter season. Service operates on Saturdays and Sundays only.

Departure from :

Venice airport 12:00 and 18:00

Treviso airport 12:45 and 18:45 Departure from Alleghe : 6:55

- arrival at Treviso airport 9:05

- arrival at Venice airport 9:40 .

Departure from Alleghe : 12:15

- arrival at Treviso airport 14:40

- arrival at Venice airport 15:15

Price : 35 Euro per person return

The transfer service is reserved for guests of the "Dolomiti Stars" accommodation facilities and is run on booking only, this is it is not a public service. We can book this service for you.

Private hire - taxi, minibus service.

Private transfers are available for any number of people. The price is quoted on per case bases, please enquire - [info@skiingitaly.net](mailto:info@skiingitaly.net) We can book this service for you.

### By car

Coming from Venice the best access road is motorway A27 Mestre-Belluno. At the exit Belluno follow state highway SS 203 "Agordina" to reach Alleghe after another 1h-drive. Alternatively from the exit Belluno go on until Ponte nelle Alpi and follow state highway SS 51 "Alemagna" which leads straight to the Val di Zoldo. Selva di Cadore can be reached through both itineraries.

Another way to reach the Civetta ski area is through motorway A22 Brennero, exit Ora.

From there drive on across the Val di Fiemme and the Val di Fassa until Canazei.

From there drive over the Fedaia Pass and reach Alleghe.

If your destination is the Val di Zoldo or Selva di Cadore, turn left at the main crossroad in Caprile

(4 Km. before Alleghe).

Drivers from abroad who come motorway A22 Brennero, are advised to take the exit Bressanone and go on until Brunico; from there drive in the direction of the Val Badia where two different options are available:

- 1.State highway "SS 48 of the Dolomites" (Pass Campolongo - Arabba - Alleghe - Val di Zoldo - Selva di Cadore)
2. Pass Valparola and then Pass Falzarego in the direction of Selva di Cadore - Val di Zoldo - Alleghe.

## Ski schools

The ski schools in Civetta ski resort are certainly among the most professional and experienced in the Dolomites. The schools are all members of the Italian Ski School Association, and boast totally 150 carving, snowboard, telemark and cross country instructors.

Children are the main ski school target customers and therefore ski instructors constantly keep up-to-date about new teaching and entertainment methods to deal with their young guests.

Adults too of course use to attend ski school lessons to learn skiing but also to improve their techniques.

### **Private lessons:**

A private lesson takes 55 minutes and the times need to be arranged with the instructor.

Price:

One on One lesson - 35 Euro per hour.

Additional participants - 6 Euro per person (up to 4 people).

### **Adults:**

Begginers and advanced (ski or snowboard)

5 day group course - Monday to Friday, from 10:00 to 12:30 .

3 day group course - Monday to Wednesday, from 10:00 to 12:30 .

Number of days 5 : High season 23.12.- 05.01 120 Euro, Low season 110 Euro .

Courses for Children:

5 day group course (ski or snowboard)

Monday to Wednesday, from 10:00 to 12:30 .

Thursday from 10:00 to 15:00 (during high season till 12:30).

Friday from 10:00 to 12:30 .

On Friday there will be a ski-race with prizes and diplomas for everyone.

Number of days 5: High season 23.12.- 05.01 120 Euro per person, Low season 110 Euro per person

Super course

Designed for groups of friends with maximum of 5 participants.

Monday to Friday 10:00 - 12:30

Price: 135 Euro per person

Furthermore we offer:

Carving lessons

Telemark lessons

Ski races for groups and ski clubs

Daily excursions



Please enquire

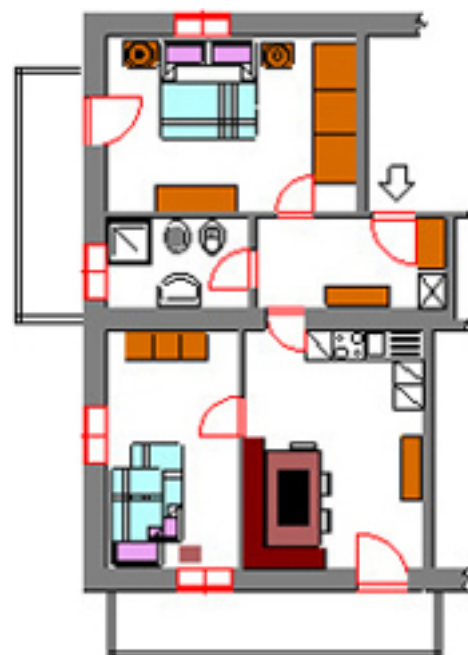
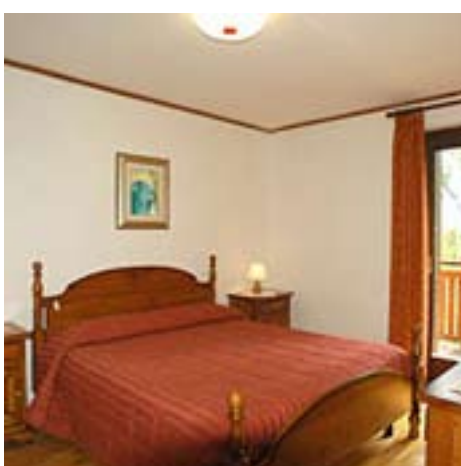
Childcare facilities

Happy Park in Alleghe, more information coming soon.

# Apartments in Alleghe

## *Residence Regina*

The residence is located in Masarè, in front of the lake. Distance to the ski-lifts and the centre of Alleghe: 700 metres, ski bus 100 mt. All the apartments offer a view of the lake.



Apartments:

Bilo 4 – two rooms: a living room with a kitchen corner and with a double sofa-bed, a bedroom with double bed, bathroom – for max up to 4 people.

Trilo 4 – three rooms: a living room with a kitchen corner, 1 bedroom with a double bed, 1 bedroom with 2 beds or bunk beds, a bathroom – for max up to 4 people.

Ttrilo 6 – three rooms: a living room with a kitchen corner, 1 bedroom with a double bed, 1 bedroom with 4 beds (split level apartment), a bathroom – for max up to 6 people.

Prices in GBP per apartment per week - Saturday to Saturday.

Period	Nr of days	BILO 4	TRILO 4	TRILO 6
13.12 - 20.12.08	7	TBA	TBA	TBA
20.12 - 27.12.08	7	TBA	TBA	TBA
27.12 - 03.01.09	7	TBA	TBA	TBA
03.01 - 10.01.09	7	TBA	TBA	TBA
10.01 - 17.01.09	7	TBA	TBA	TBA
17.01 - 24.01.09	7	TBA	TBA	TBA
24.01 - 31.01.09	7	TBA	TBA	TBA
31.01 - 07.02.09	7	TBA	TBA	TBA
07.02 - 14.02.09	7	TBA	TBA	TBA
14.02 - 21.02.09	7	TBA	TBA	TBA
21.02 - 28.02.09	7	TBA	TBA	TBA
29.02 - 07.03.09	7	TBA	TBA	TBA



07.03 - 14.03.09	7	TBA	TBA	TBA
14.03 - 21.03.09	7	TBA	TBA	TBA
21.03 - 28.03.09	7	TBA	TBA	TBA
The definite price depends on the exchange rate on the day of the booking.				

Included in the price : 7 night accommodation; heating, electric power, water, gas, bed linen, climate charge; booking fee, booking following services: transfers,ski school; local taxes, VAT; insurance including : medical cover, personal accident cover, public liability, emergency rescue\*;

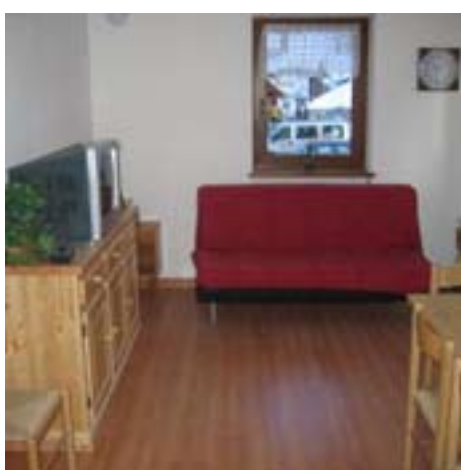
Not included : deposit (110 Euro), bathroom linen, transport, ski passes, final cleaning

Final cleaning : Please note that clients are responsible for the cleaning of the apartment upon departure. In the case of an apartment being left unclean there will be a charge of 50 Euro.

\*The insurance included in the price is a minimum cover required by EU law, please see our Insurance details page for information on the value of the coverage.

## ***Casa Nili***

Recently renovated Casa Nili is located in front of the ski facilities, close to the centre of Alleghe.



### **Apartments:**

Trilo 6 - three rooms, kitchen, living room with a double sofa bed, one double bedroom, one bedroom with a bunk bed. Apartments for up to 6 people.

Quadrillo 8 - four rooms, kitchen, living room with a double sofa bed, one double bedroom, one bedroom with two single beds, bedroom with a bunk bed.

Apartments for up to 8 people.

Prices in GBP per apartment per week - Saturday to Saturday.

Period	Nr of days	TRILO 6	QUADRILLO 8
13.12 - 20.12.08	7	TBA	TBA
20.12 - 27.12.08	7	TBA	TBA
27.12 - 03.01.09	7	TBA	TBA
03.01 - 10.01.09	7	TBA	TBA
10.01 - 17.01.09	7	TBA	TBA
17.01 - 24.01.09	7	TBA	TBA
24.01 - 31.01.09	7	TBA	TBA

31.01 - 07.02.09	7	TBA	TBA
07.02 - 14.02.09	7	TBA	TBA
14.02 - 21.02.09	7	TBA	TBA
21.02 - 28.02.09	7	TBA	TBA
29.02 - 07.03.09	7	TBA	TBA
07.03 - 14.03.09	7	TBA	TBA
14.03 - 21.03.09	7	TBA	TBA
21.03 - 28.03.09	7	TBA	TBA
The definite price depends on the exchange rate on the day of the booking.			

Included in the price : 7 night accommodation; heating, electric power, water, gas, bed linen, climate charge; booking fee, booking following services: transfers,ski school; local taxes, VAT; insurance including : medical cover, personal accident cover, public liability, emergency rescue\*;

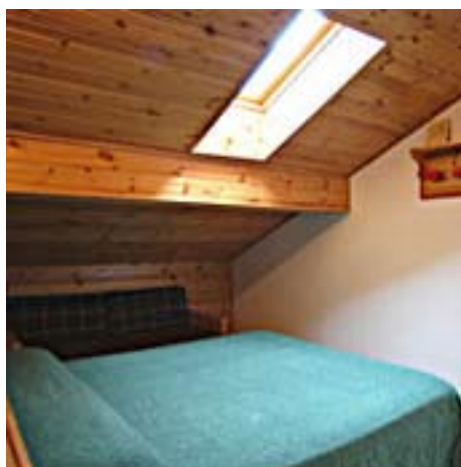
Not included : deposit (110 Euro), bathroom linen, transport, ski passes, final cleaning

Final cleaning : Please note that clients are responsible for the cleaning of the apartment upon departure. In the case of an apartment being left unclean there will be a charge of 50 Euro.

\*The insurance included in the price is a minimum cover required by EU law, please see our Insurance details page for information on the value of the coverage.

## ***Condominio Edera***

The residence is located in Masarè. Distance to the ski-lifts and the centre of Alleghe: 1200 metres, ski bus 300 meters.



Apartments:

Bilo 2/4 – two rooms: a living room with a kitchen corner and with a double sofa-bed, a bedroom with double bed, bathroom – for max up to 4 people.

Trilo 4 – three rooms: a living room with a kitchen corner, 1 bedroom with a double bed, 1 bedroom with 2 beds, a bathroom – for max up to 4 people.

Prices in GBP per apartment per week - Saturday to Saturday.

Period	Nr of days	BILO 2/ 4	TRILO 4
13.12 - 20.12.08	7	TBA	TBA
20.12 - 27.12.08	7	TBA	TBA
27.12 - 03.01.09	7	TBA	TBA

03.01 - 10.01.09	7	TBA	TBA
10.01 - 17.01.09	7	TBA	TBA
17.01 - 24.01.09	7	TBA	TBA
24.01 - 31.01.09	7	TBA	TBA
31.01 - 07.02.09	7	TBA	TBA
07.02 - 14.02.09	7	TBA	TBA
14.02 - 21.02.09	7	TBA	TBA
21.02 - 28.02.09	7	TBA	TBA
29.02 - 07.03.09	7	TBA	TBA
07.03 - 14.03.09	7	TBA	TBA
14.03 - 21.03.09	7	TBA	TBA
21.03 - 28.03.09	7	TBA	TBA
The definite price depends on the exchange rate on the day of the booking.			

Included in the price : 7 night accommodation; heating, electric power, water, gas, bed linen, climate charge; booking fee, booking following services: transfers,ski school; local taxes, VAT; insurance including : medical cover, personal accident cover, public liability, emergency rescue\*;

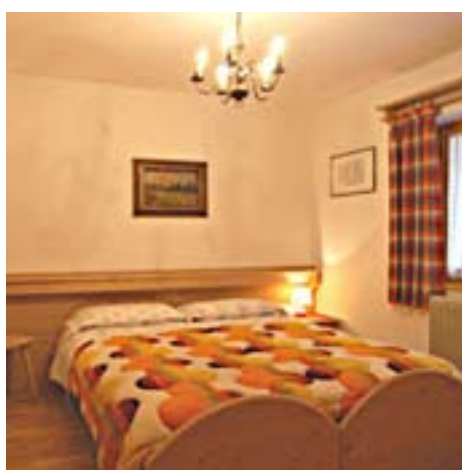
Not included : deposit (110 Euro), bathroom linen, transport, ski passes, final cleaning

Final cleaning : Please note that clients are responsible for the cleaning of the apartment upon departure. In the case of an apartment being left unclean there will be a charge of 50 Euro.

\*The insurance included in the price is a minimum cover required by EU law, please see our Insurance details page for information on the value of the coverage.

## ***Villa Rita***

Recently built house located in Masarè, in sunny position with private garden. Distance to the ski-lifts and the centre of Alleghe: 1200 metres, ski bus 300 mt.



Apartments:

Bilo 2 / 4 - one bedroom apartment, kitchen, lounge with double sofa bed, double bedroom, bathroom, for up to 4 people.

Prices in GBP per apartment per week - Saturday to Saturday.

Period	Nr of days	BILO 2/ 4
13.12 - 20.12.08	7	TBA



20.12 - 27.12.08	7	TBA
27.12 - 03.01.09	7	TBA
03.01 - 10.01.09	7	TBA
10.01 - 17.01.09	7	TBA
17.01 - 24.01.09	7	TBA
24.01 - 31.01.09	7	TBA
31.01 - 07.02.09	7	TBA
07.02 - 14.02.09	7	TBA
14.02 - 21.02.09	7	TBA
21.02 - 28.02.09	7	TBA
29.02 - 07.03.09	7	TBA
07.03 - 14.03.09	7	TBA
14.03 - 21.03.09	7	TBA
21.03 - 28.03.09	7	TBA
The definite price depends on the exchange rate on the day of the booking.		

Included in the price : 7 night accommodation; heating, electric power, water, gas, bed linen, climate charge; booking fee, booking following services: transfers,ski school; local taxes, VAT; insurance including : medical cover, personal accident cover, public liability, emergency rescue\*;

Not included : deposit (110 Euro), bathroom linen, transport, ski passes, final cleaning

Final cleaning : Please note that clients are responsible for the cleaning of the apartment upon departure. In the case of an apartment being left unclean there will be a charge of 50 Euro.

\*The insurance included in the price is a minimum cover required by EU law, please see our Insurance details page for information on the value of the coverage.

## Apartments in Malga Ciapella

### *Residence Marmolada*

The residence is located in Malga Ciapella, the centre of the Dolomiti Superski area, close to the cable-cars of Marmolada glacier. The apartments are well furnished and equipped, their position is ideal to spend a wonderful winter holidays.



Apartments:

Bilo 2/4 – two rooms: a living room with a kitchen corner and with a double sofa-bed, a bedroom with

double bed, bathroom – for max up to 4 people.

Bilo 2/6 – two rooms: a living room with a kitchen corner and with a double sofa-bed, a bedroom with double bed and a bunk bed, bathroom – for max up to 6 people.

Prices in GBP per apartment per week - Saturday to Saturday.

Period	Nr of days	BILO 2/4	BILO 2/6
13.12 - 20.12.08	7	TBA	TBA
20.12 - 27.12.08	7	TBA	TBA
27.12 - 03.01.09	7	TBA	TBA
03.01 - 10.01.09	7	TBA	TBA
10.01 - 17.01.09	7	TBA	TBA
17.01 - 24.01.09	7	TBA	TBA
24.01 - 31.01.09	7	TBA	TBA
31.01 - 07.02.09	7	TBA	TBA
07.02 - 14.02.09	7	TBA	TBA
14.02 - 21.02.09	7	TBA	TBA
21.02 - 28.02.09	7	TBA	TBA
29.02 - 07.03.09	7	TBA	TBA
07.03 - 14.03.09	7	TBA	TBA
14.03 - 21.03.09	7	TBA	TBA
21.03 - 28.03.09	7	TBA	TBA

The definite price depends on the exchange rate on the day of the booking.

Included in the price : 7 night accommodation; heating, electric power, water, gas, bed linen, climate charge; booking fee, booking following services: transfers,ski school; local taxes, VAT; insurance including : medical cover, personal accident cover, public liability, emergency rescue\*;

Not included : deposit (110 Euro), bathroom linen, transport, ski passes, final cleaning

Final cleaning : Please note that clients are responsible for the cleaning of the apartment upon departure. In the case of an apartment being left unclean there will be a charge of 50 Euro.

\*The insurance included in the price is a minimum cover required by EU law, please see our Insurance details page for information on the value of the coverage.

## ***Residence Edelweiss***

The residence is located in Malga Ciapella, the centre of the Dolomiti Superski area, close to the cable-cars of Marmolada glacier. The apartments are well furnished and equipped, their position is ideal to spend a wonderful winter holidays



#### Apartments:

Bilo 2/4 – two rooms: a living room with a kitchen corner and with a double sofa-bed, a bedroom with double bed, bathroom – for max up to 4 people.

Bilo 2/6 – two rooms: a living room with a kitchen corner and with a double sofa-bed, a bedroom with double bed and a bunk bed, bathroom – for max up to 6 people.

#### Prices in GBP per apartment per week - Saturday to Saturday.

Period	Nr of days	BILO 2/4	BILO 2/6
13.12 - 20.12.08	7	TBA	TBA
20.12 - 27.12.08	7	TBA	TBA
27.12 - 03.01.09	7	TBA	TBA
03.01 - 10.01.09	7	TBA	TBA
10.01 - 17.01.09	7	TBA	TBA
17.01 - 24.01.09	7	TBA	TBA
24.01 - 31.01.09	7	TBA	TBA
31.01 - 07.02.09	7	TBA	TBA
07.02 - 14.02.09	7	TBA	TBA
14.02 - 21.02.09	7	TBA	TBA
21.02 - 28.02.09	7	TBA	TBA
29.02 - 07.03.09	7	TBA	TBA
07.03 - 14.03.09	7	TBA	TBA
14.03 - 21.03.09	7	TBA	TBA
21.03 - 28.03.09	7	TBA	TBA

The definite price depends on the exchange rate on the day of the booking.

Included in the price : 7 night accommodation; heating, electric power, water, gas, bed linen, climate charge; booking fee, booking following services: transfers,ski school; local taxes, VAT; insurance including : medical cover, personal accident cover, public liability, emergency rescue\*;

Not included : deposit (110 Euro), bathroom linen, transport, ski passes, final cleaning

Final cleaning : Please note that clients are responsible for the cleaning of the apartment upon departure. In the case of an apartment being left unclean there will be a charge of 50 Euro.

\*The insurance included in the price is a minimum cover required by EU law, please see our Insurance details page for information on the value of the coverage.